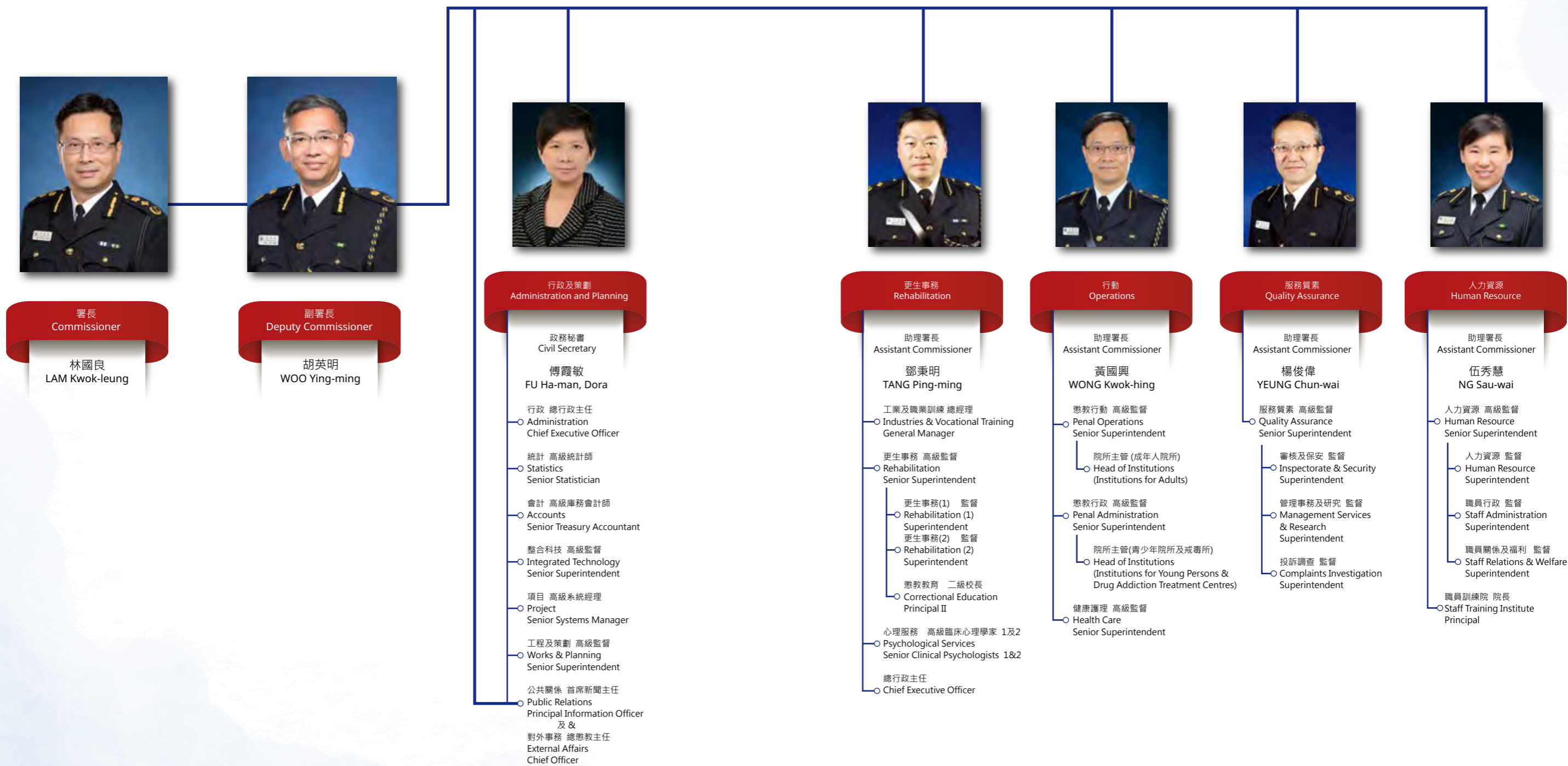


(2017年12月31日)  
(as at 31.12.2017)



Locations of Correctional Services Department Headquarters, Staff Training Institute and Correctional Facilities

(2017年12月31日)  
(as at 31.12.2017)



**H** 懲教署總部  
CSD Headquarters

**S** 職員訓練院  
Staff Training Institute

懲教設施  
Correctional Facilities

- |  |   |
|--|---|
| 1 羅湖懲教所<br>Lo Wu Correctional Institution                  | 16 歌連臣角懲教所<br>Cape Collinson Correctional Institution |
| 2 壁屋懲教所<br>Pik Uk Correctional Institution                 | 17 大潭峽懲教所<br>Tai Tam Gap Correctional Institution     |
| 3 壁屋監獄<br>Pik Uk Prison                                    | 18 赤柱監獄<br>Stanley Prison                             |
| 4 伊利沙伯醫院羈留病房<br>Custodial ward at Queen Elizabeth Hospital | 19 東頭懲教所<br>Tung Tau Correctional Institution         |
| 5 百勤樓<br>Pelican House                                     | 20 白沙灣懲教所<br>Pak Sha Wan Correctional Institution     |
| 6 豐力樓<br>Phoenix House                                     | 21 瑪麗醫院羈留病房<br>Custodial ward at Queen Mary Hospital  |
| 7 勵行更生中心<br>Lai Hang Rehabilitation Centre                 | 22 喜靈洲懲教所<br>Hei Ling Chau Correctional Institution   |
| 8 荔枝角收押所<br>Lai Chi Kok Reception Centre                   | 23 喜靈洲戒毒所<br>Hei Ling Chau Addiction Treatment Centre |
| 9 勵敬懲教所<br>Lai King Correctional Institution               | 24 勵願懲教所<br>Nei Kwu Correctional Institution          |
| 10 芝蘭更生中心<br>Chi Lan Rehabilitation Centre                 | 25 勵新懲教所<br>Lai Sun Correctional Institution          |
| 11 大欖女懲教所<br>Tai Lam Centre for Women                      | 26 塘福懲教所<br>Tong Fuk Correctional Institution         |
| 12 大欖懲教所<br>Tai Lam Correctional Institution               | 27 石壁監獄<br>Shek Pik Prison                            |
| 13 紫荊樓<br>Bauhinia House                                   | 28 沙咀懲教所<br>Sha Tsui Correctional Institution         |
| 14 蕙蘭更生中心<br>Wai Lan Rehabilitation Centre                 | 29 勵志更生中心<br>Lai Chi Rehabilitation Centre            |
| 15 小欖精神病治療中心<br>Siu Lam Psychiatric Centre                 |   |

香港懲教署2017年年報  
Hong Kong Correctional Services Annual Review 2017

設計 Design: Nexify Limited

香港特別行政區政府懲教署2017  
HKSARG Correctional Services Department 2017

兌換率  
除另有說明外，本年報所用的「元」均指港元。自一九八三年十月十七日起，政府透過發行鈔票機制，將港元與美元掛鈎，以7.8港元固定匯率。

Exchange Rate  
When dollars are quoted in this Review, they are, unless otherwise stated, Hong Kong dollars. Since October 17, 1983, the Hong Kong dollar has been linked to the US dollar, through an arrangement in the note-issue mechanism, at a fixed rate of HK\$7.8=US\$1.

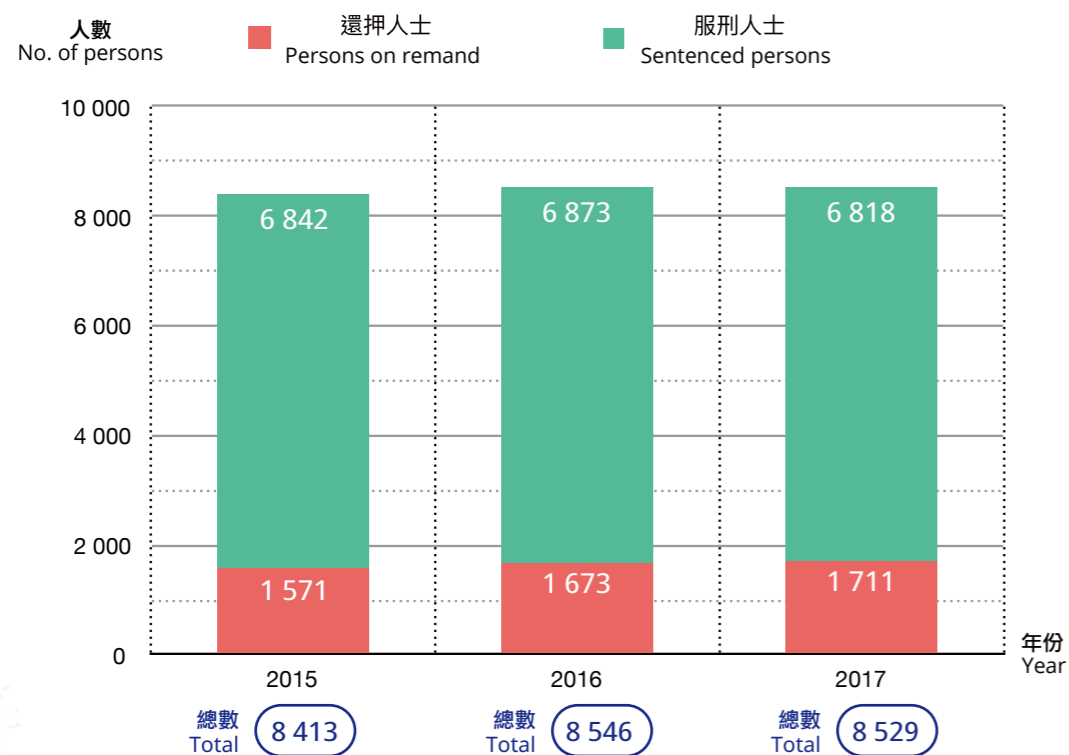
本年報所載資料經多方核證，力求準確無誤。如有謬誤遺漏，或因使用有關資料而引致任何損失、作為或不作為，或因依據有關資料而得出任何意見，香港特別行政區政府均無須負上任何責任。

Every effort has been made to ensure accuracy. The Government of the Hong Kong Special Administrative Region is not responsible for any inaccuracies, errors or omissions in this Review, or for any loss, action, or inaction arising from the use of, or for advice based on, any information therein.

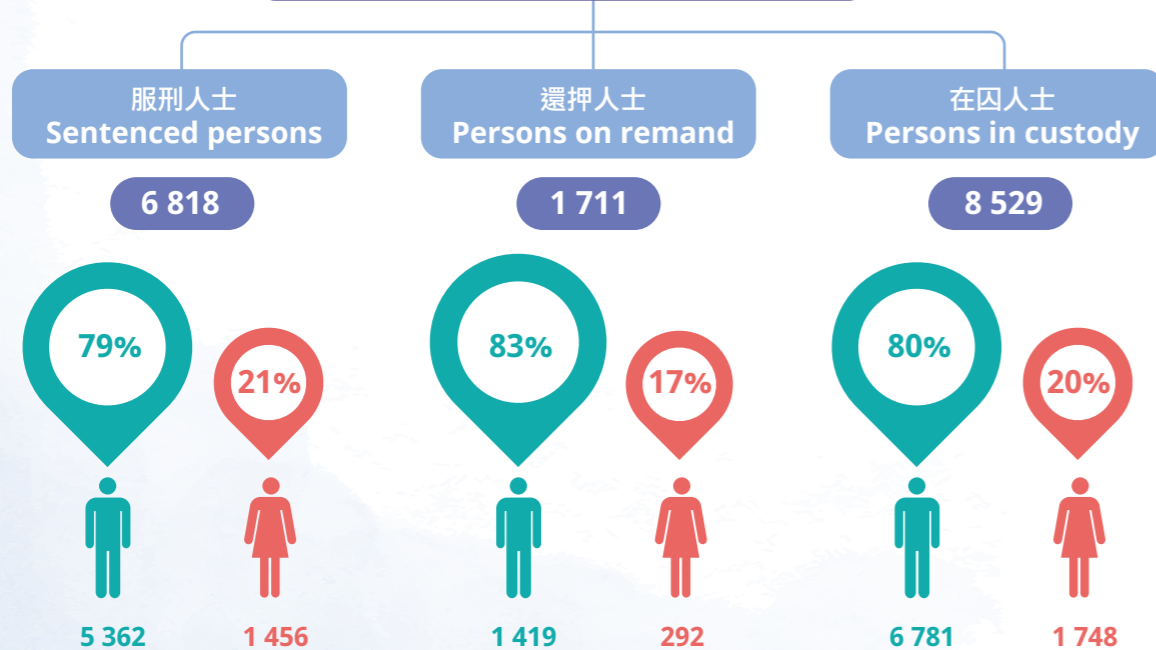
# 附錄三 Appendix 3

## 按類別劃分的平均每日在囚人士數目

### Average Daily Number of Persons in Custody by Category



### 2017 按性別劃分的人數 No. of persons by gender

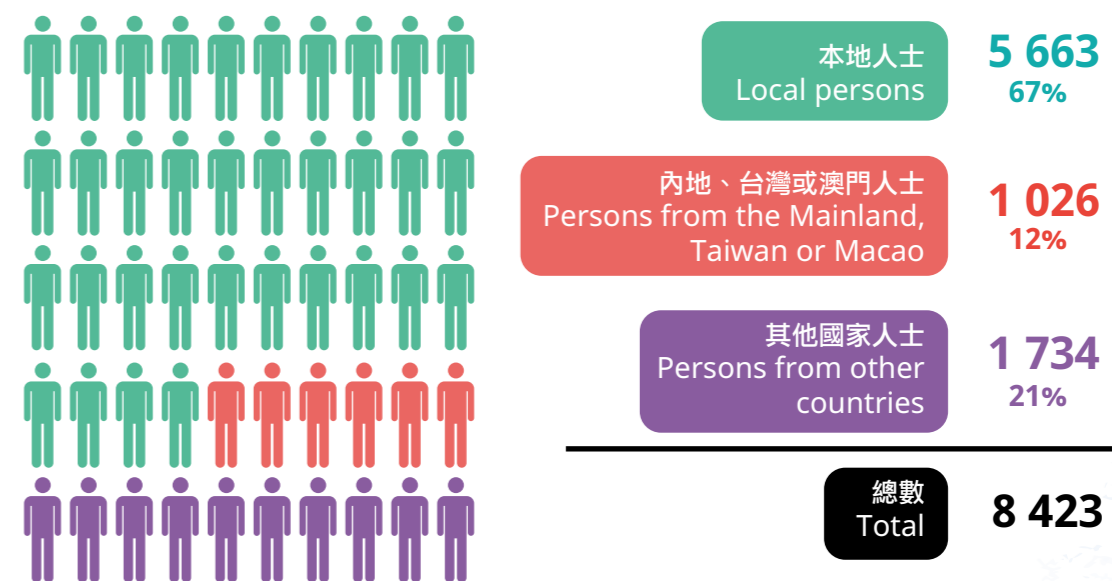


# 附錄四 Appendix 4

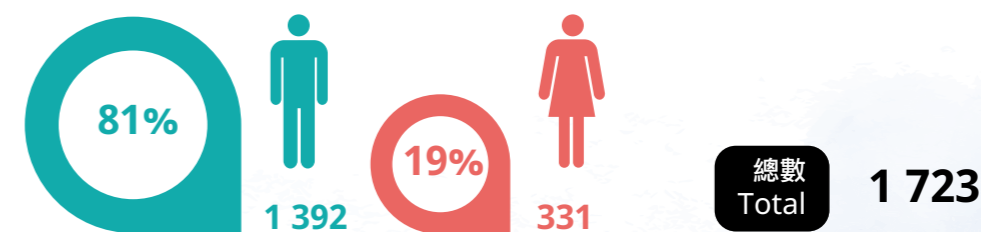
## 懲教署管理逾10 000名人士 (以2017年12月31日計算)

### Over 10 000 Persons under Management of Correctional Services Department (As at 31.12.2017)

#### 按本地 / 非本地人士劃分的在囚人士數目 Number of Persons in Custody by Local/Non-local Persons



#### 按性別劃分釋後監管人士的數目 Number of Persons under Supervision after Release by Gender



# 附錄五 Appendix 5

各懲教院所囚人士數目  
(以2017年12月31日計算)

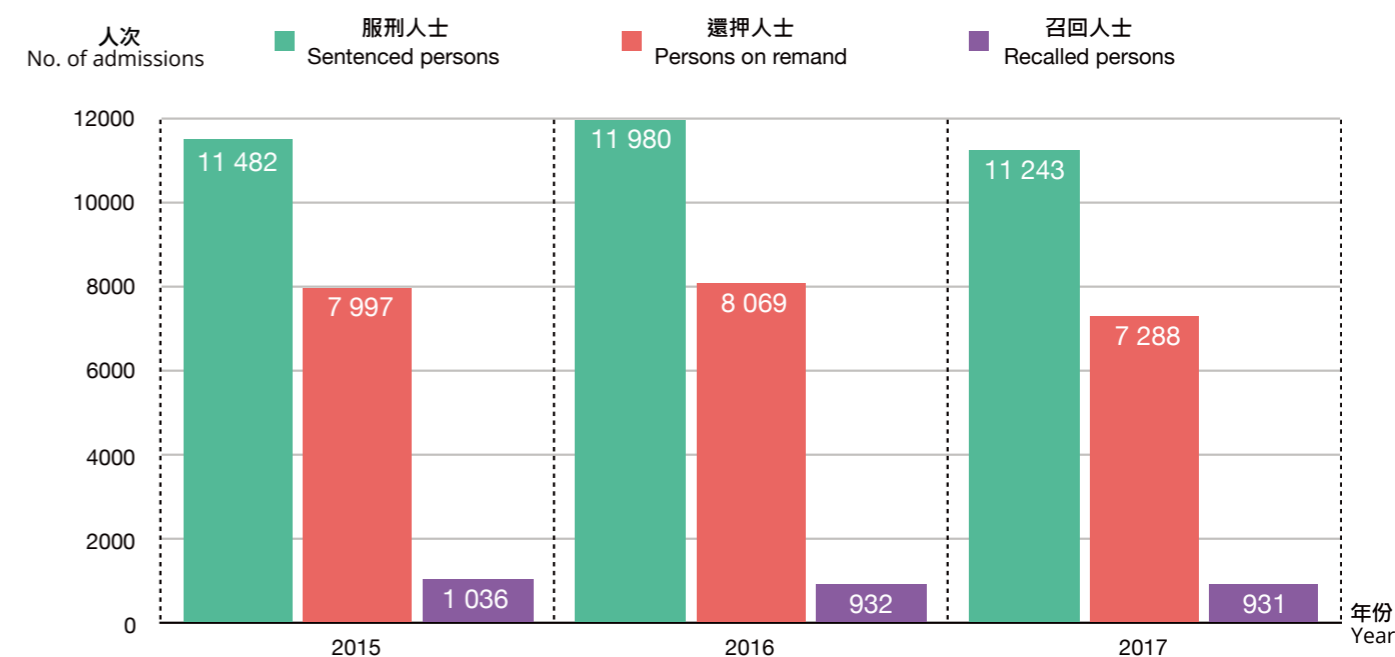
## Statistics on Number of Persons in Custody by Institution (as at 31.12.2017)

院所 Institution		服刑人士 Sentenced persons	還押人士 Persons on remand	總數 Total
<b>監獄 Prison</b>				
喜靈洲懲教所	Hei Ling Chau Correctional Institution	386	-	386
荔枝角收押所	Lai Chi Kok Reception Centre	386	1 075	1 461
勵敬懲教所	Lai King Correctional Institution	25	11	36
羅湖懲教所	Lo Wu Correctional Institution	1 212	52	1 264
白沙灣懲教所	Pak Sha Wan Correctional Institution	301	-	301
壁屋懲教所	Pik Uk Correctional Institution	93	86	179
壁屋監獄	Pik Uk Prison	383	-	383
石壁監獄	Shek Pik Prison	417	-	417
赤柱監獄	Stanley Prison	1 230	227	1 457
大欖女懲教所	Tai Lam Centre for Women	97	197	294
大欖懲教所	Tai Lam Correctional Institution	439	-	439
大潭峽懲教所	Tai Tam Gap Correctional Institution	40	-	40
塘福懲教所	Tong Fuk Correctional Institution	659	-	659
東頭懲教所	Tung Tau Correctional Institution	309	-	309
<b>戒毒所 Drug Addiction Treatment Centre</b>				
喜靈洲戒毒所	Hei Ling Chau Addiction Treatment Centre	284	-	284
勵新懲教所	Lai Sun Correctional Institution	74	-	74
勵願懲教所	Nei Kwu Correctional Institution	102	-	102
<b>教導所 Training Centre</b>				
歌連臣角懲教所	Cape Collinson Correctional Institution	62	-	62
<b>勞教中心 Detention Centre</b>				
沙咀懲教所	Sha Tsui Correctional Institution	26	-	26
<b>更生中心 Rehabilitation Centre</b>				
勵志更生中心	Lai Chi Rehabilitation Centre	10	-	10
勵行更生中心	Lai Hang Rehabilitation Centre	13	-	13
芝蘭更生中心	Chi Lan Rehabilitation Centre	5	-	5
蕙蘭更生中心	Wai Lan Rehabilitation Centre	3	-	3
<b>精神病治療中心 Psychiatric Centre</b>				
小欖精神病治療中心	Siu Lam Psychiatric Centre	172	47	219
<b>總數</b>		<b>Total: 6 728</b>	<b>1 695</b>	<b>8 423</b>

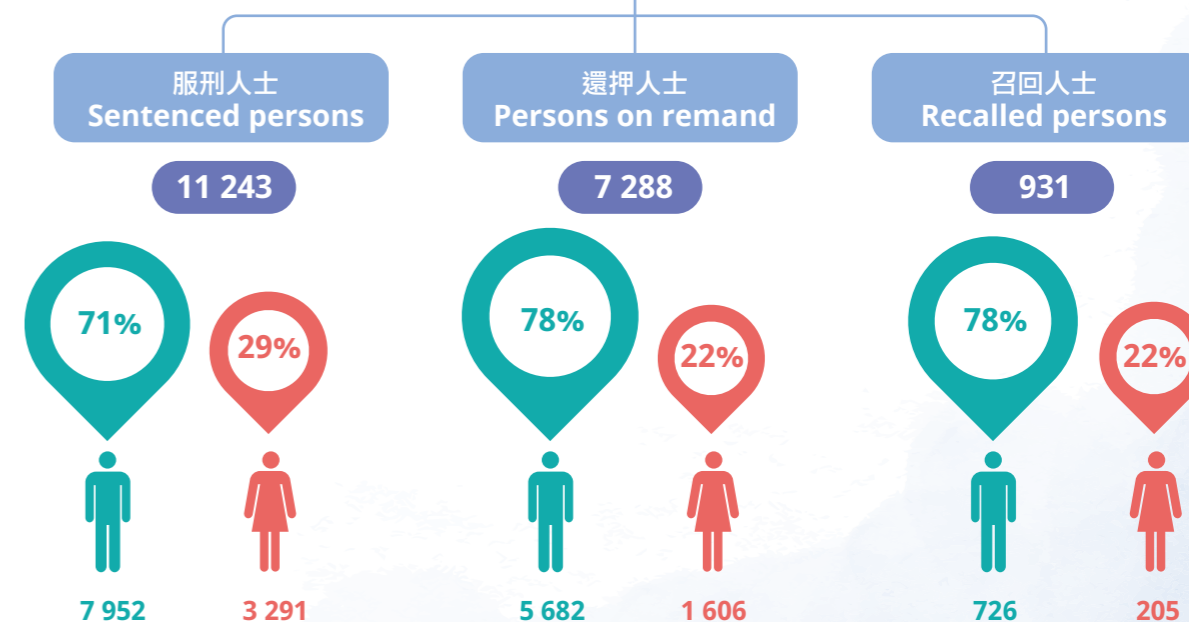
# 附錄六 Appendix 6

## 按類別劃分的懲教院所收納人次

## Admission of Persons in Custody to Correctional Institutions by Category



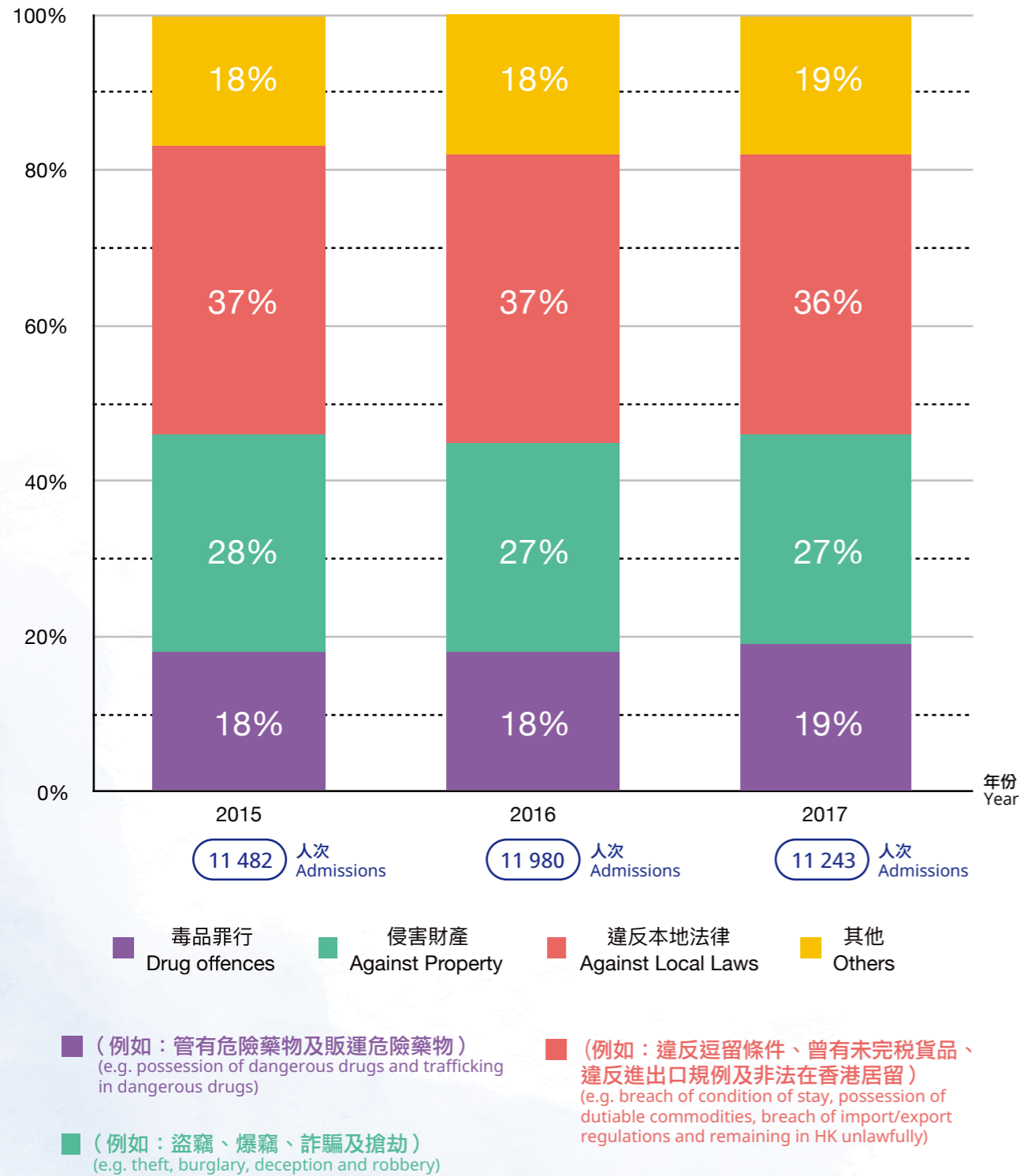
## 2017 按性別劃分的人次 No. of admissions by gender



# 附錄七 Appendix 7

按罪行類別劃分被收納入  
懲教院所的服刑人次

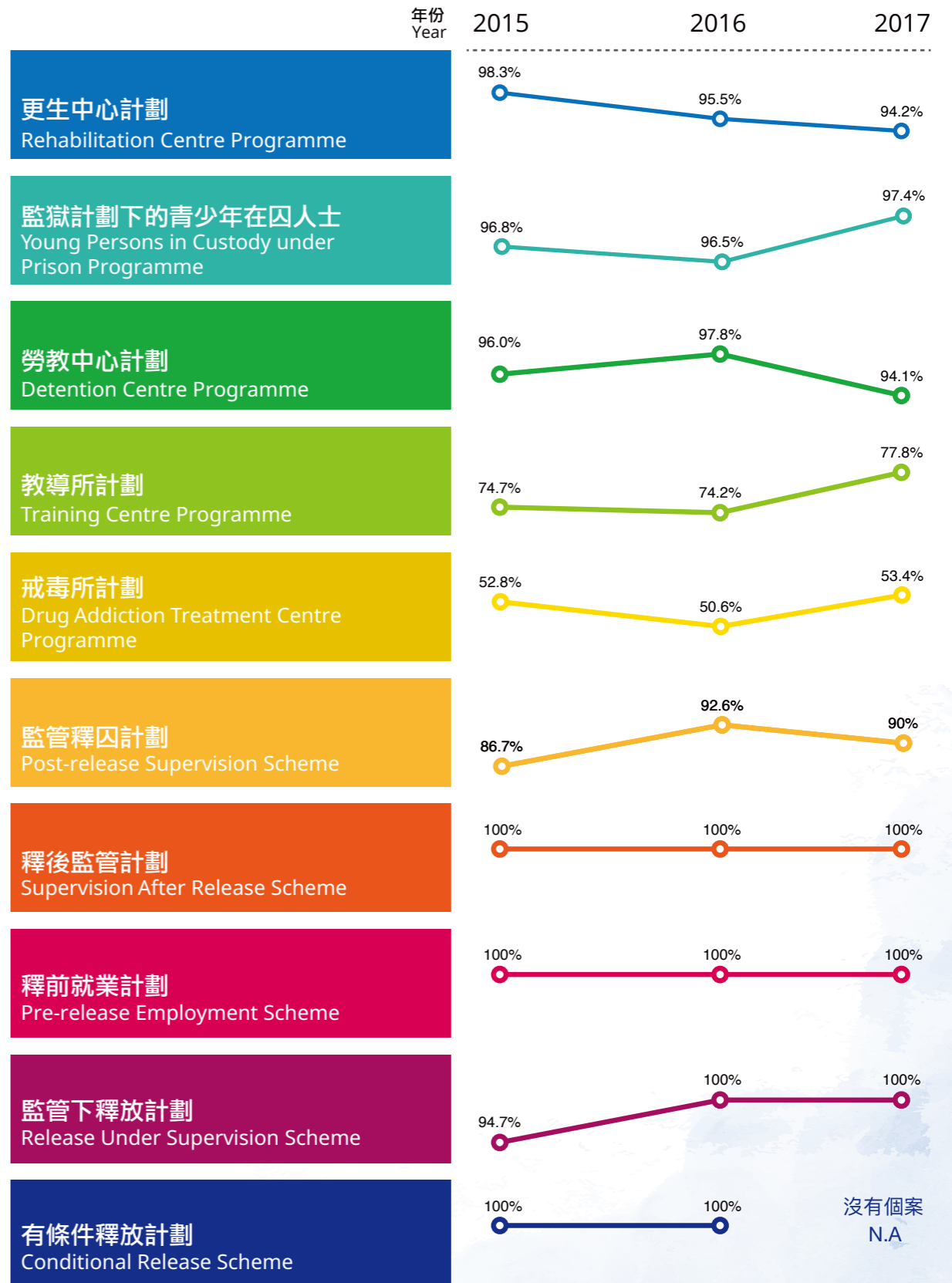
Admission of Sentenced Persons to  
Correctional Institutions by Type of Offence



# 附錄八 Appendix 8

在監管期內重新融入社會  
計劃的成功率

Success Rates of Reintegration  
Programmes within the Supervision Period

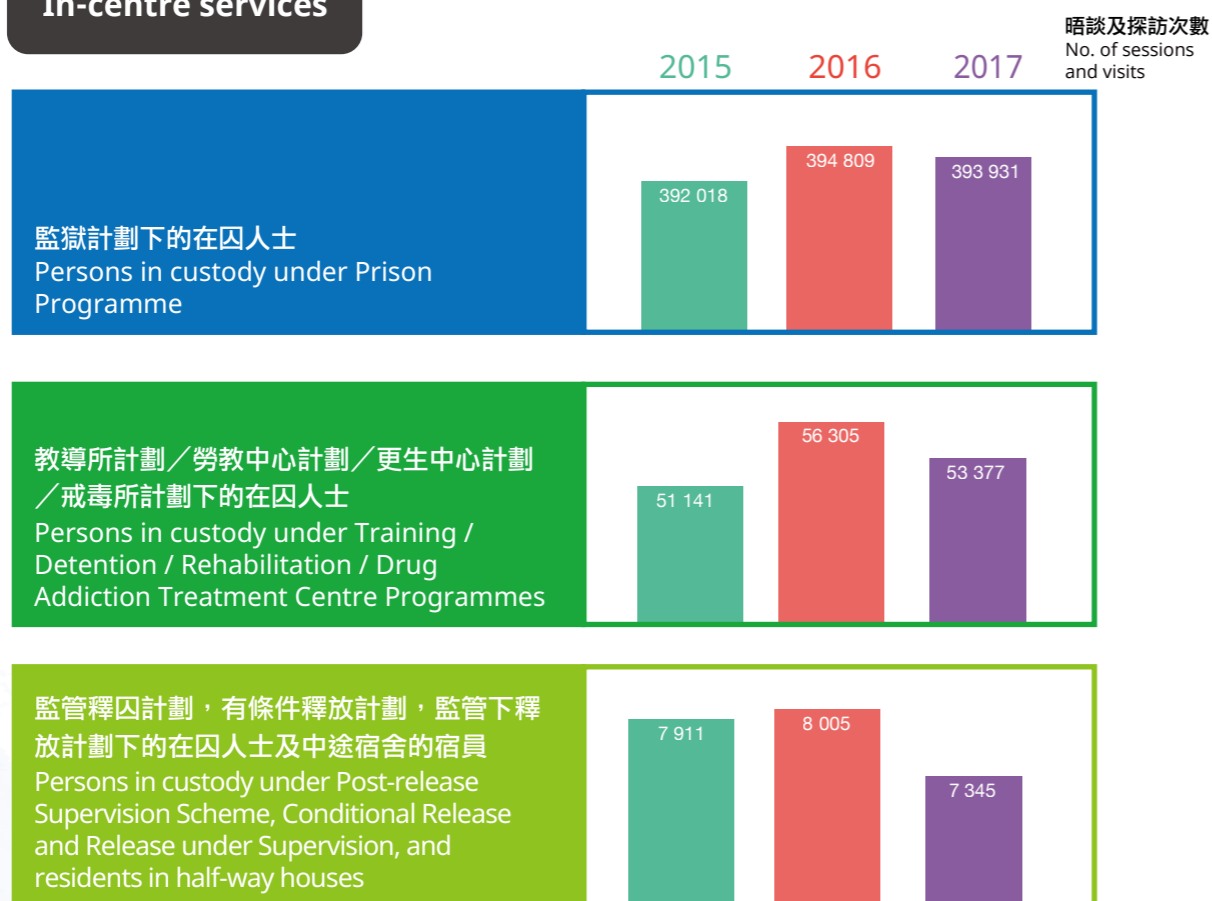


## 附錄九 Appendix 9

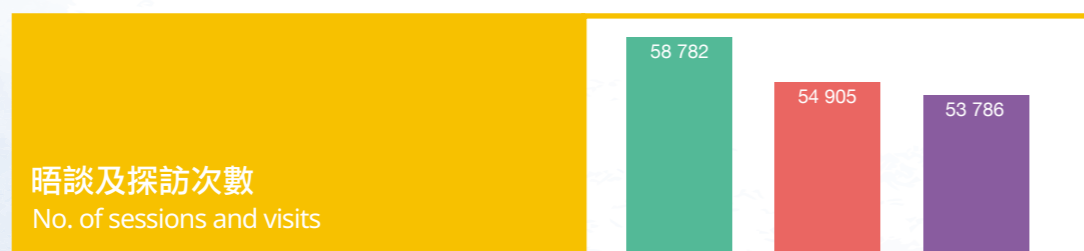
### 心理輔導及福利服務 晤談及探訪次數

#### Number of Psychological Counselling and Welfare Services Sessions and Visits

##### 院所內的服務 In-centre services



##### 院所外的服務 Out-centre services



## 附錄十 Appendix 10

### 二零一七年獲嘉獎人員名單

#### Commendations to Staff in 2017

##### 銀紫荊星章 Silver Bauhinia Star (SBS)

邱子昭 YAU Chi-chiu, CSDSM

##### 香港懲教事務卓越獎章 Hong Kong Correctional Services Medal for Distinguished Service (CSDSM)

羅益民 LAW Yick-man

##### 香港懲教事務榮譽獎章 Hong Kong Correctional Services Medal for Meritorious Service (CSMSM)

李國寶 LEE Kwok-po  
林耀禮 LAM Yiu-lai  
陳文忠 CHAN Man-chung, Simon  
梁偉江 LEUNG Wai-kong  
劉美玲 LAU Mei-ling

##### 公務員事務局局長嘉獎 Secretary for the Civil Service's Commendation

王廣安 WONG Kwong-on  
陳文強 CHAN Man-keung, Gary  
曾志賢 TSANG Chi-yin  
黃名中 WONG Ming-chung  
盧婉儀 LO Yuen-yi

##### 署長嘉獎 Commissioner's Commendation

許佐恒 HUI Cho-hang  
楊燕恩 YEUNG Yin-yan  
鄧秉明 TANG Ping-ming  
呂耀 LUI Yiu  
鄭育良 CHENG Yuk-leung  
蔡柎軒 CHOI Nam-hin  
曾偉賢 TSANG Wai-yin  
伍永鴻 NG Wing-hung

##### 助理署長嘉獎 Assistant Commissioner's Commendation

吳超覺 NG Chiu-kok  
何國文 HO Kwok-man  
洪嘉諾 HUNG Ka-lok  
梁浩基 LEUNG Ho-kei  
黃栢穎 WONG Pak-wing  
容宇 YUNG Yu  
王錦齊 WONG Kam-chai  
邱勁松 YAU King-chung  
祁梓豪 KI Tsz-ho  
劉明輝 LAU Ming-fai  
陳柏文 CHAN Pak-man  
梁燕玲 LEUNG Yin-ling  
潘競雄 POON King-hung  
許釗鴻 HUI Chiu-hung  
劉嘉屏 LAU Ka-ping  
余澤堃 YU Chak-kwan  
袁俊傑 YUEN Chun-kit  
鄭有俊 CHENG Yau-chun  
鄭玉龍 CHENG Yuk-lung  
楊顯宗 YEUNG Hin-chung  
魏純潔 NGAI Shun-kit  
何振東 HO Chun-tung

# 附錄十一

## Appendix 11

二零一五至二零一七年投訴調查組接收由在囚人士、公眾人士及職員提出的個案數目<sup>①</sup>

### Number of Cases Received by Complaints Investigation Unit (CIU) from Persons in Custody, the Public and Staff from 2015 to 2017<sup>①</sup>

		年份 Year	2015	2016	2017
<b>A</b>	由投訴調查組展開調查的個案	Cases entailing CIU investigation	113	124	123
	-使用非必要武力	-Use of unnecessary force	15	16	22
	-行為不當	-Misconduct of staff	69	48	50
	-疏忽職守	-Negligence of duty	9	15	15
	-濫用權力	-Abuse of authority	14	28	26
	-紀律行動不公正	-Injustice in disciplinary action	5	15	8
	-不滿院所的政策或程序	-Institutional policy / procedure	1	1	2
	-其他	-Others	0	1	0
<b>B</b>	由投訴調查組監察院所處理的個案 <sup>②</sup>	Cases handled by institutions under CIU monitoring <sup>②</sup>	63	49	55
<b>C</b>	由投訴調查組以簡易程序處理的重複投訴個案 <sup>③</sup>	Repeated complaints handled by CIU in a simple administrative way <sup>③</sup>	72	0	0
<b>D</b>	由投訴調查組處理的求助 / 查詢個案 <sup>④</sup>	Cases of requests / enquiries handled by CIU <sup>④</sup>	104	186	161
	<b>總數</b>	<b>Total (A+B+C+D)</b>	<b>352</b>	<b>359</b>	<b>339</b>
<b>E</b>	由懲教署投訴委員會審核通過投訴調查組的調查結果	Findings of CIU investigation endorsed by Correctional Services Department Complaints Committee (CSDCC)	121	118	95
	- 證明屬實	-Substantiated	1	2	3
	- 證實另有別情	-Substantiated other than reported	0	1	0
	- 無法完全證實	-Not fully substantiated	0	0	0
	- 虛假	-False	17	9	4
	- 虛假及惡意	-False & malicious	0	0	0
	- 並無過錯	-Faultless	9	13	11
	- 未能證實	-Not proven	0	1	1
	- 無法證實	-Unsubstantiated	67	73	52
	- 終止調查	-Curtailed	12	14	14
	- 無從追查	-Not pursuable	14	5	9
	- 撤回	-Withdrawn	1	0	1
<b>F</b>	經懲教署投訴委員會覆核的個案	Cases re-examined by CSDCC	2	4	5
<b>G</b>	懲教署署長處理的上訴個案	Cases of appeal handled by Commissioner of Correctional Services (CCS)	0	0	3
<b>H</b>	懲教署投訴上訴委員會處理的上訴個案 <sup>⑤</sup>	Cases of appeal handled by Correctional Services Department Complaints Appeal Board (CSDCAB) <sup>⑤</sup>	-	0	9
<b>I</b>	懲教署投訴委員會審核通過的服務改善建議	Recommendation for service improvement endorsed by CSDCC	30	31	23

“-” 表示「不適用」  
“-” denotes “Not applicable”

- ① 自2017年起，本報所刊登的投訴調查組接收個案，已包括由本署職員提出的個案，並同時反映於2015年及2016年的統計數字內。  
Since 2017, the number of cases received by CIU as published in this Annual Review included cases lodged by CSD staff, and such inclusion as well reflected in the statistics of 2015 and 2016.
- ② 投訴個案屬於性質輕微及與院所運作有關，例如院所環境、膳食及探訪安排等。  
The cases were complaints of minor and operational nature such as institutional environment, diet and visit arrangement.
- ③ 重複投訴指由同一投訴人重複提出相類似的投訴。為避免該投訴人繼續濫用本署的投訴機制及善用處理投訴的資源，投訴調查組循簡易的行政程序處理有關個案。  
Those complaints were grievances repeatedly raised by the same complainant. In order to prevent the complainant from further abusing the complaints handling mechanism of the Department, CIU handled those cases in a simple administrative way.
- ④ 個案包括由電郵、電話熱線或親臨投訴調查組提出，或透過1823政府電話中心轉介。  
The cases included those raised via CIU email, phone calls, visiting CIU or referred by 1823 Call Centre.
- ⑤ 懲教署投訴上訴委員會於二零一六年八月一日正式成立，取代原有由懲教署投訴委員會擔任的覆核功能和由懲教署署長處理上訴個案的職能。  
CSDCAB was established w.e.f. August 1, 2016, replacing the former appeal handling mechanism, i.e. re-examination by CSDCC and appeal to CCS.

